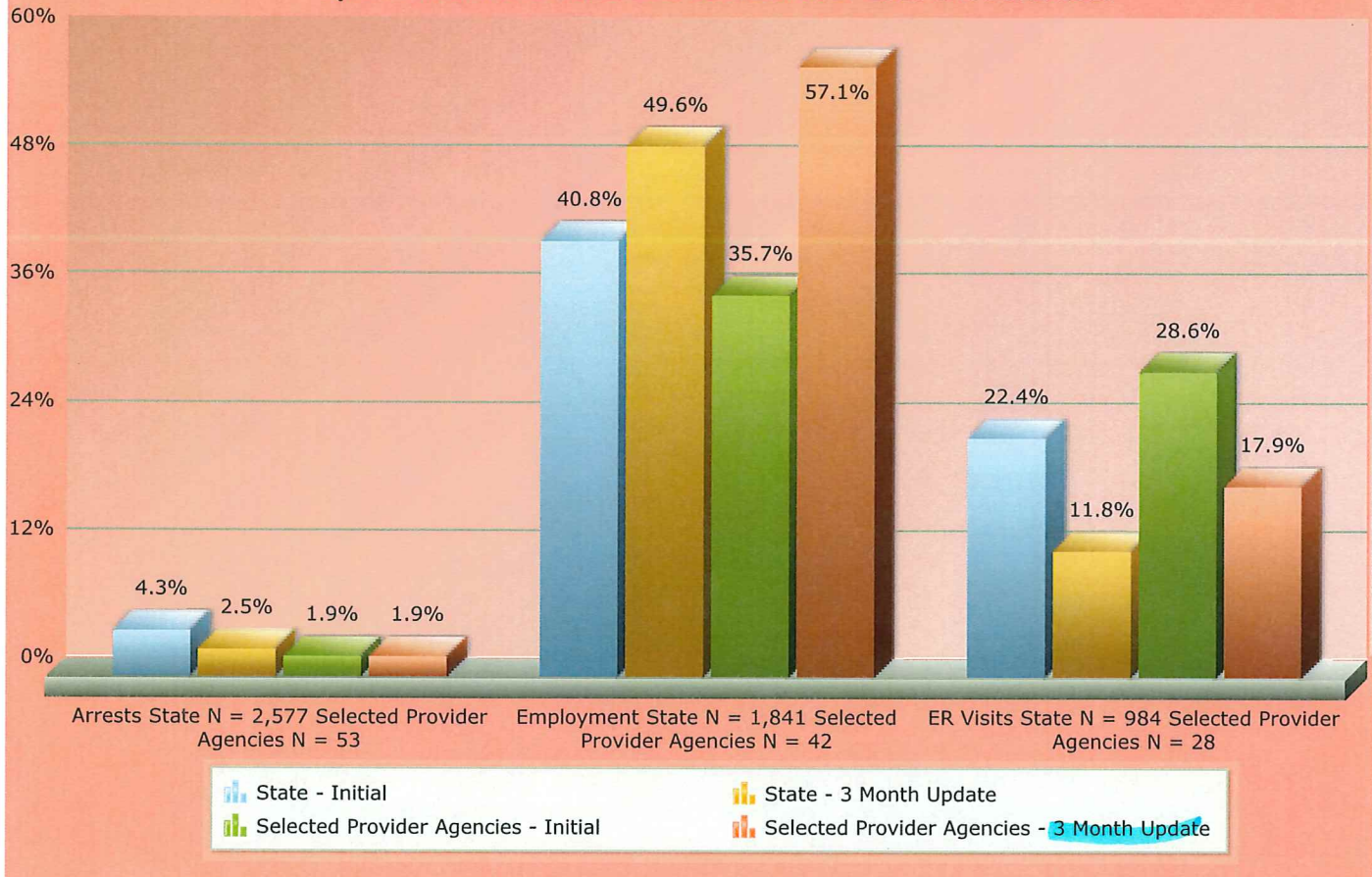


Adult Substance Use Disorder

Update Interviews Conducted Between JULY 2016 and JUNE 2017



Measure Descriptions:

Arrests - Percentage of consumers who reported being arrested in the month before treatment versus during treatment.

Employment - Percentage of consumers who are in the labor force who reported full or part-time employment in the 3 months before treatment versus during treatment.

ER Visits - Percentage of consumers who reported having visits to a hospital emergency room in the 3 months before treatment versus during treatment.

Service Description:

90853 - Group Therapy (non-multiple family group) ROPT

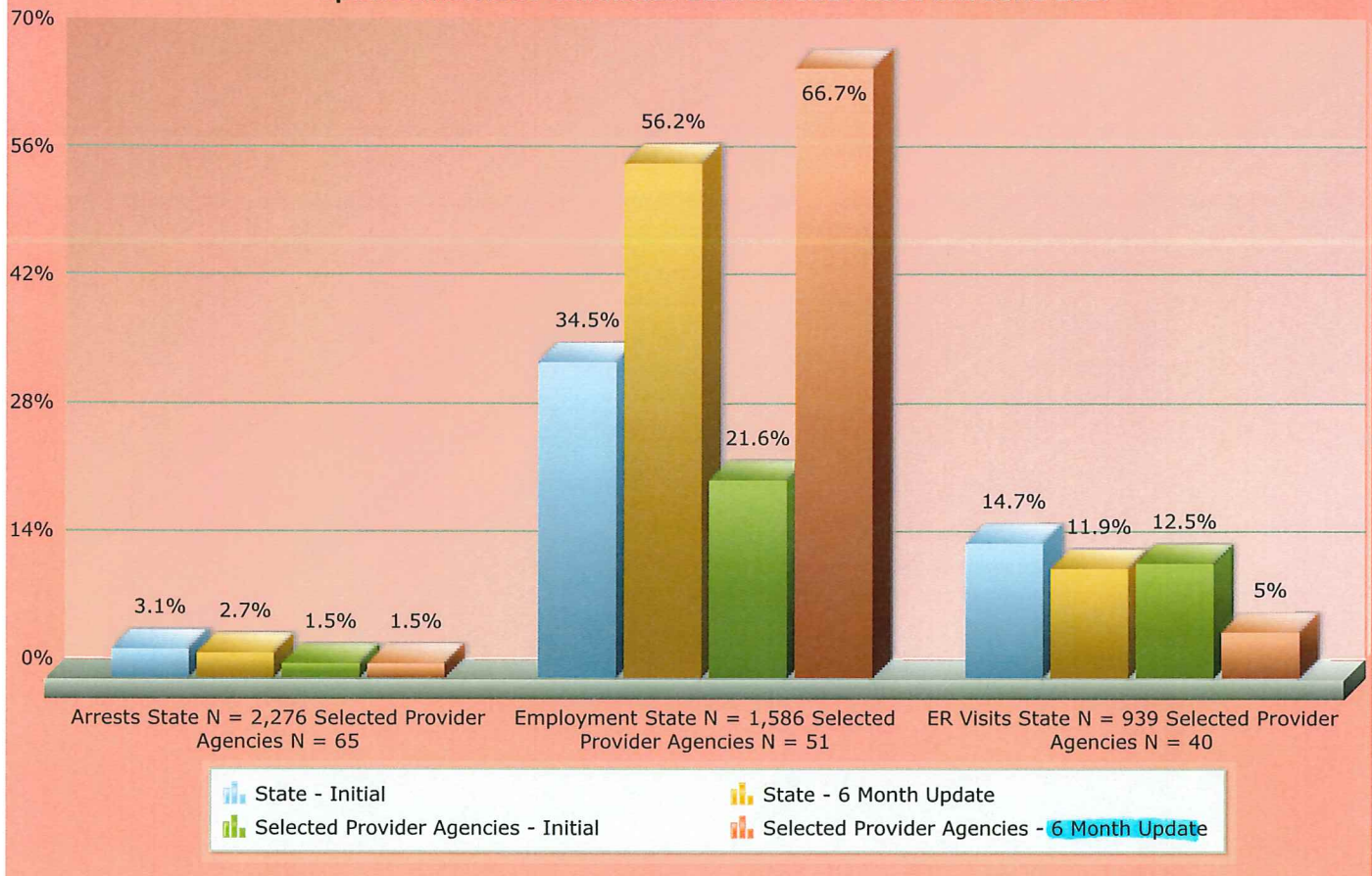
Initial Interviews compared to Selected Update Interviews for the same consumers. NC-TOPPS Outcomes at a Glance 2.0 reports provide key outcome measures for substance use disorder and mental health consumers. Based on the outcome measure selected, only the appropriate consumer groups are available. The user must select one of these and then click Generate Report. The data for the NC-TOPPS Outcomes at a Glance 2.0 reports are based on consumers' completed Updates in the most recent six or twelve months. For example, an NC-TOPPS Outcomes at a Glance 2.0 report generated in the month of June will include data from Updates completed from December 1, 2009 through May 31, 2010. Please note NC-TOPPS Outcomes at a Glance 2.0 reports will not be displayed on any outcome measure where the number of cases is less than 10.

Print

Close

Adult Substance Use Disorder

Update Interviews Conducted Between JULY 2016 and JUNE 2017



Measure Descriptions:

Arrests - Percentage of consumers who reported being arrested in the month before treatment versus during treatment.

Employment - Percentage of consumers who are in the labor force who reported full or part-time employment in the 3 months before treatment versus during treatment.

ER Visits - Percentage of consumers who reported having visits to a hospital emergency room in the 3 months before treatment versus during treatment.

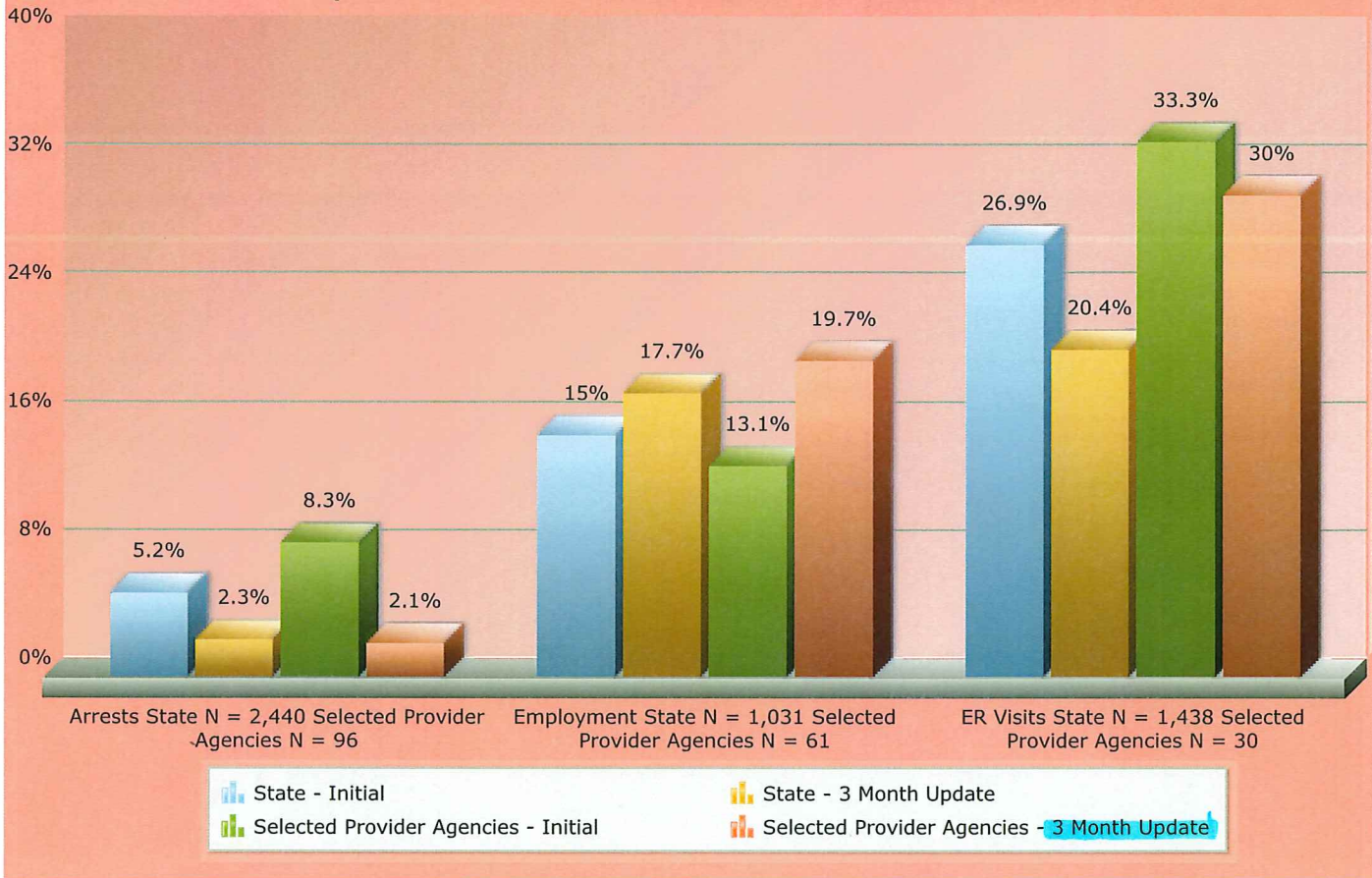
Service Description:

90853 - Group Therapy (non-multiple family group) **ROPT**

Initial Interviews compared to Selected Update Interviews for the same consumers. NC-TOPPS Outcomes at a Glance 2.0 reports provide key outcome measures for substance use disorder and mental health consumers. Based on the outcome measure selected, only the appropriate consumer groups are available. The user must select one of these and then click Generate Report. The data for the NC-TOPPS Outcomes at a Glance 2.0 reports are based on consumers' completed Updates in the most recent six or twelve months. For example, an NC-TOPPS Outcomes at a Glance 2.0 report generated in the month of June will include data from Updates completed from December 1, 2009 through May 31, 2010. Please note NC-TOPPS Outcomes at a Glance 2.0 reports will not be displayed on any outcome measure where the number of cases is less than 10.

Adult Substance Use Disorder

Update Interviews Conducted Between JULY 2016 and JUNE 2017



Measure Descriptions:

Arrests - Percentage of consumers who reported being arrested in the month before treatment versus during treatment.

Employment - Percentage of consumers who are in the labor force who reported full or part-time employment in the 3 months before treatment versus during treatment.

ER Visits - Percentage of consumers who reported having visits to a hospital emergency room in the 3 months before treatment versus during treatment.

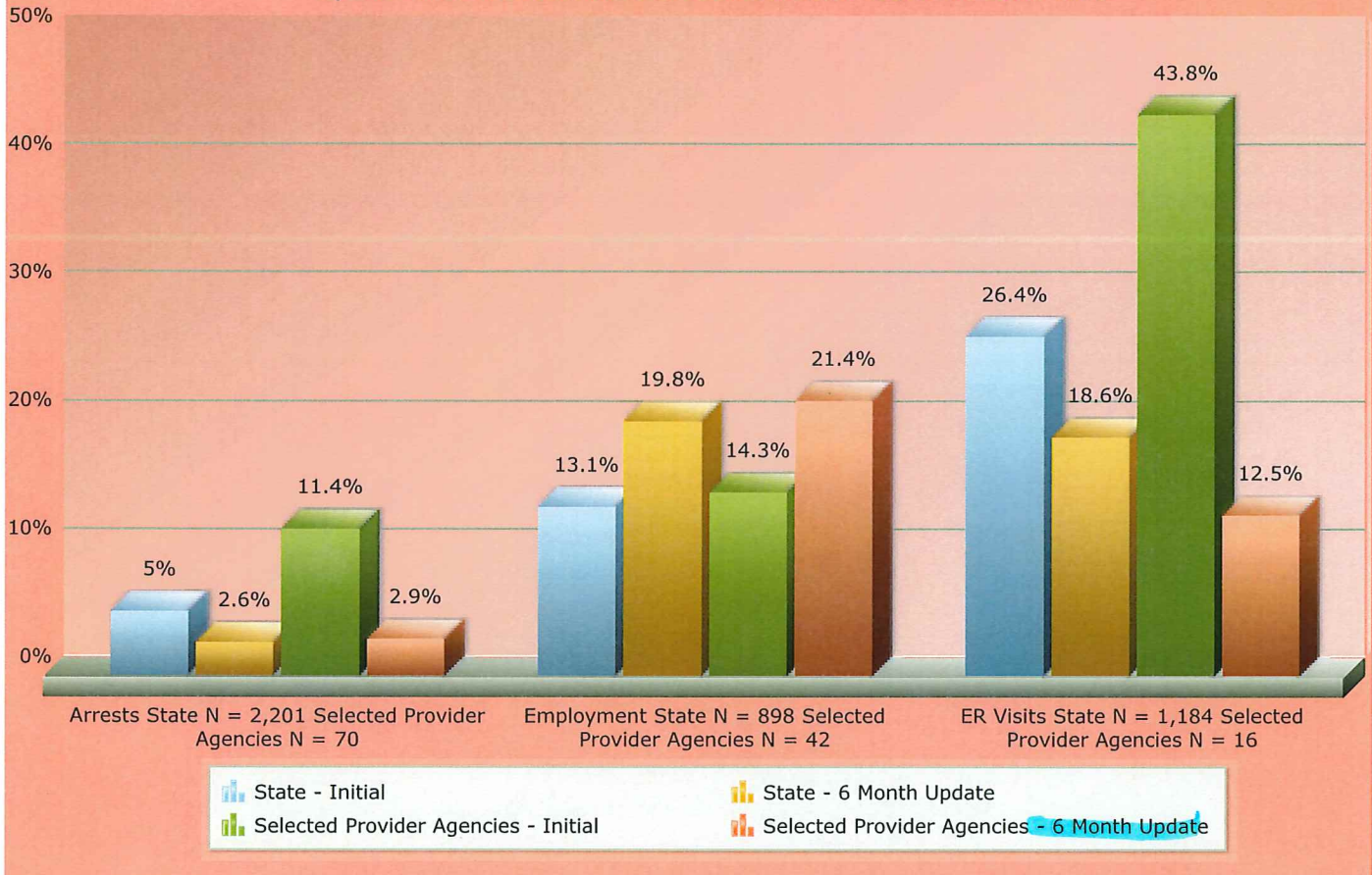
Service Description:

H2035 - Substance Abuse Comprehensive Outpatient Treatment (SACOT)

Initial Interviews compared to Selected Update Interviews for the same consumers. NC-TOPPS Outcomes at a Glance 2.0 reports provide key outcome measures for substance use disorder and mental health consumers. Based on the outcome measure selected, only the appropriate consumer groups are available. The user must select one of these and then click Generate Report. The data for the NC-TOPPS Outcomes at a Glance 2.0 reports are based on consumers' completed Updates in the most recent six or twelve months. For example, an NC-TOPPS Outcomes at a Glance 2.0 report generated in the month of June will include data from Updates completed from December 1, 2009 through May 31, 2010. Please note NC-TOPPS Outcomes at a Glance 2.0 reports will not be displayed on any outcome measure where the number of cases is less than 10.

Adult Substance Use Disorder

Update Interviews Conducted Between JULY 2016 and JUNE 2017



Measure Descriptions:

Arrests - Percentage of consumers who reported being arrested in the month before treatment versus during treatment.

Employment - Percentage of consumers who are in the labor force who reported full or part-time employment in the 3 months before treatment versus during treatment.

ER Visits - Percentage of consumers who reported having visits to a hospital emergency room in the 3 months before treatment versus during treatment.

Service Description:

H2035 Substance Abuse Comprehensive Outpatient Treatment (SACOT)

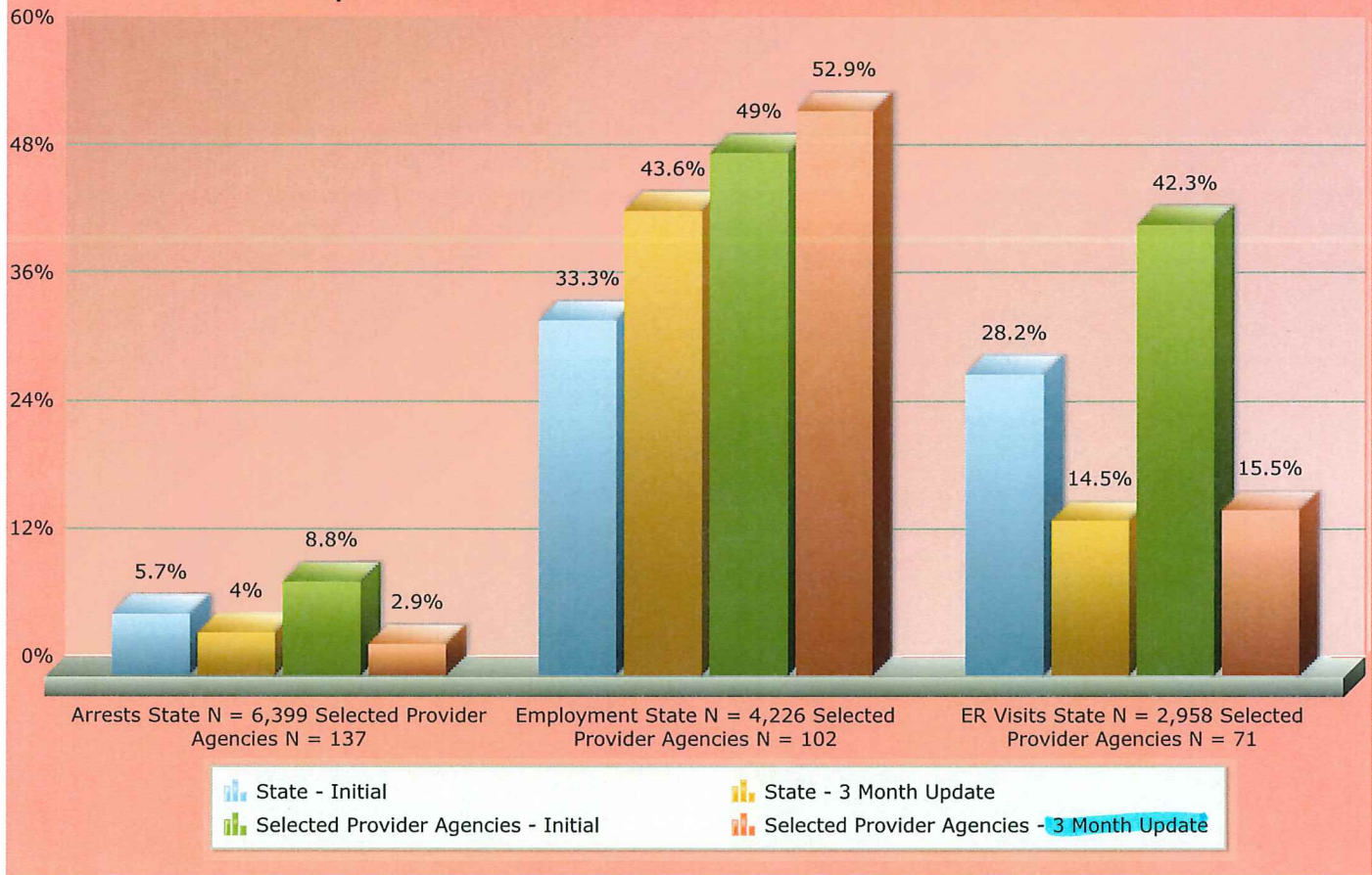
Initial Interviews compared to Selected Update Interviews for the same consumers. NC-TOPPS Outcomes at a Glance 2.0 reports provide key outcome measures for substance use disorder and mental health consumers. Based on the outcome measure selected, only the appropriate consumer groups are available. The user must select one of these and then click Generate Report. The data for the NC-TOPPS Outcomes at a Glance 2.0 reports are based on consumers' completed Updates in the most recent six or twelve months. For example, an NC-TOPPS Outcomes at a Glance 2.0 report generated in the month of June will include data from Updates completed from December 1, 2009 through May 31, 2010. Please note NC-TOPPS Outcomes at a Glance 2.0 reports will not be displayed on any outcome measure where the number of cases is less than 10.

Print

Close

Adult Substance Use Disorder

Update Interviews Conducted Between JULY 2016 and JUNE 2017



Measure Descriptions:

- Arrests** - Percentage of consumers who reported being arrested in the month before treatment versus during treatment.
- Employment** - Percentage of consumers who are in the labor force who reported full or part-time employment in the 3 months before treatment versus during treatment.
- ER Visits** - Percentage of consumers who reported having visits to a hospital emergency room in the 3 months before treatment versus during treatment.

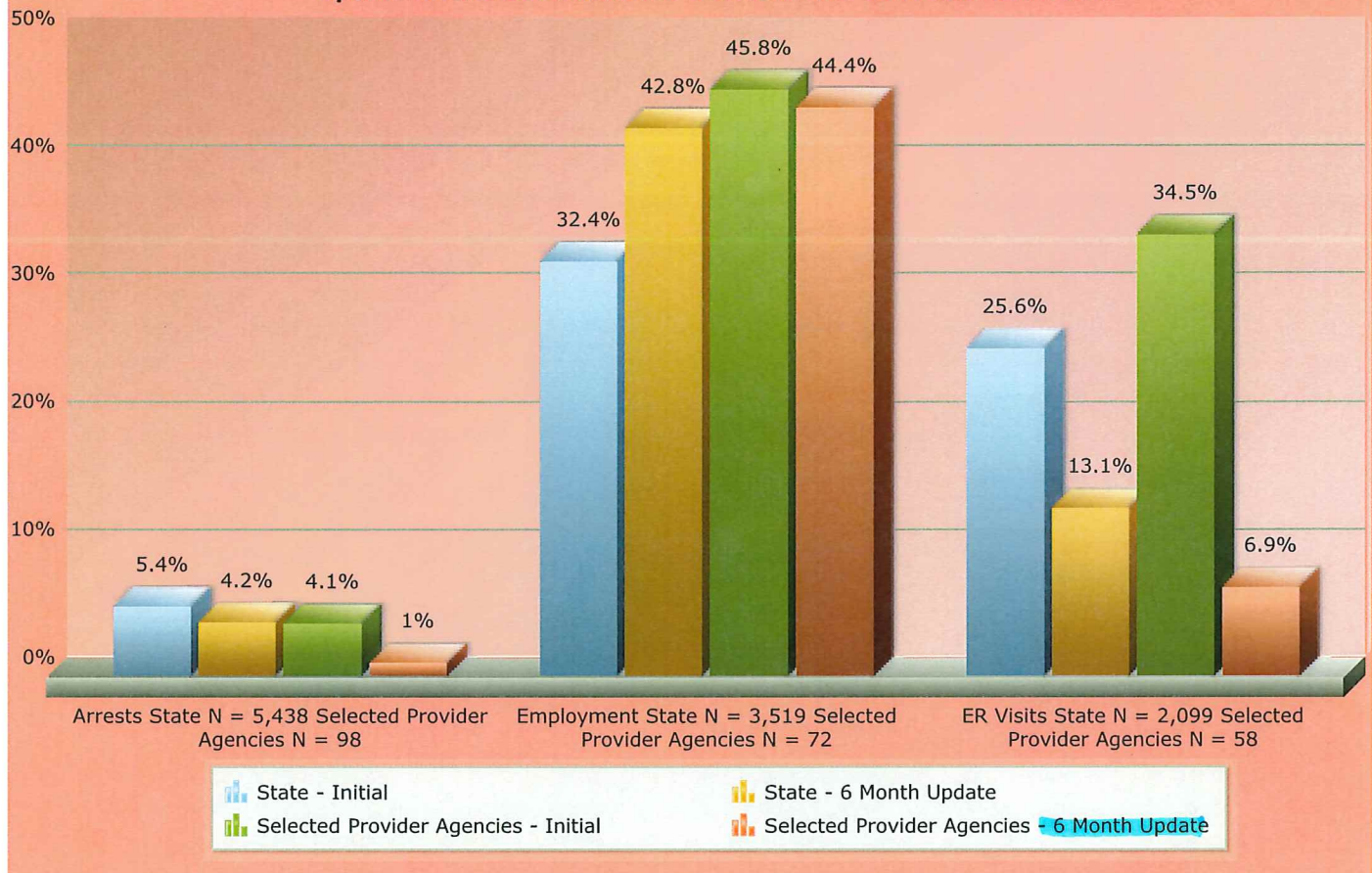
Service Description:

H0015 - Substance Abuse Intensive Outpatient Program (SAIOP)

Initial Interviews compared to Selected Update Interviews for the same consumers. NC-TOPPS Outcomes at a Glance 2.0 reports provide key outcome measures for substance use disorder and mental health consumers. Based on the outcome measure selected, only the appropriate consumer groups are available. The user must select one of these and then click Generate Report. The data for the NC-TOPPS Outcomes at a Glance 2.0 reports are based on consumers' completed Updates in the most recent six or twelve months. For example, an NC-TOPPS Outcomes at a Glance 2.0 report generated in the month of June will include data from Updates completed from December 1, 2009 through May 31, 2010. Please note NC-TOPPS Outcomes at a Glance 2.0 reports will not be displayed on any outcome measure where the number of cases is less than 10.

Adult Substance Use Disorder

Update Interviews Conducted Between JULY 2016 and JUNE 2017



Measure Descriptions:

Arrests - Percentage of consumers who reported being arrested in the month before treatment versus during treatment.

Employment - Percentage of consumers who are in the labor force who reported full or part-time employment in the 3 months before treatment versus during treatment.

ER Visits - Percentage of consumers who reported having visits to a hospital emergency room in the 3 months before treatment versus during treatment.

Service Description:

H0015 - Substance Abuse Intensive Outpatient Program (SAIOP)

Initial Interviews compared to Selected Update Interviews for the same consumers. NC-TOPPS Outcomes at a Glance 2.0 reports provide key outcome measures for substance use disorder and mental health consumers. Based on the outcome measure selected, only the appropriate consumer groups are available. The user must select one of these and then click Generate Report. The data for the NC-TOPPS Outcomes at a Glance 2.0 reports are based on consumers' completed Updates in the most recent six or twelve months. For example, an NC-TOPPS Outcomes at a Glance 2.0 report generated in the month of June will include data from Updates completed from December 1, 2009 through May 31, 2010. Please note NC-TOPPS Outcomes at a Glance 2.0 reports will not be displayed on any outcome measure where the number of cases is less than 10.